

KLIMCHI

KLIMCHI COLLECTIONS

2024

KLIMCHI's heart and soul is dedicated to handcrafting beautiful glassware for the moments in life we want to hold onto. The breath-taking. The heartbreaking. The astonishing. The beautiful. As we imbue our designs with a curiosity and passion for life, our vision is to create contemporary glass art that will become part of your own story.

Klimchi Studio

Nestled in the 'Crystal Valley' mountain region of the Czech Republic, the kilns of KLIMCHI studios have been used by glass artisans to sculpt Bohemian crystal since 1905. It was then 2019 when entrepreneur Lukas Klimcak brought new life to the workshops. Inspired by the dramatic landscape of the region, Lukas and his new team now bring an exciting and youthful vision to his family's tradition of handmade glass production.

Since 2020, KLIMCHI has fast become known across the globe for its exclusive and dynamic collections, created under the guidance of creative director Frantisek Jungvirt. A renowned glass artist, Frantisek has pushed KLIMCHI's designs to rediscover and popularise techniques that have been forgotten, inspiring a new generation of art lovers and designers. Thus, the ancient art of glass blowing and historical decors tell a new story of the young KLIMCHI brand with minimalist modern design and dynamic pigments.



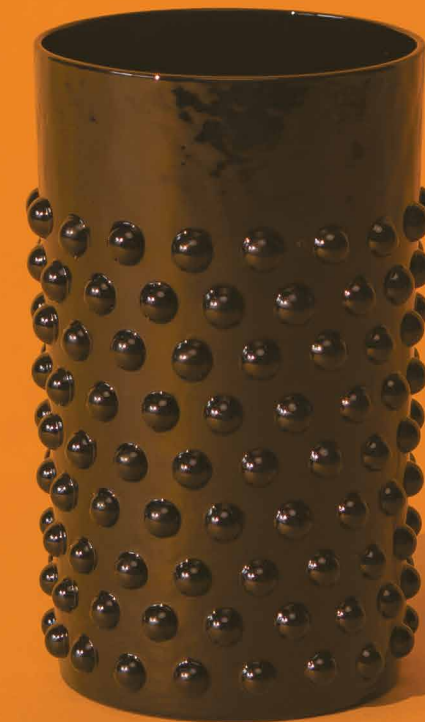
The Roots From Which We Grow

Since the founding of our factory, all KLIMCHI glassware is hand-produced in the Bohemian city of Kamenicky Senov, a place widely revered as the cradle of world-renowned glass manufacture. Bohemian crystal ensures a hallmark of quality and glass artisanship hard to find anywhere else.

In 1905, the KLIMCHI glass factory we still use today was built by none other than the same French engineers who constructed the Eiffel Tower. Their steel design forms the core infrastructure of the main factory and even after more than 100 years it is considered one of the most historical and beautiful buildings in the region.

"The history of Czech glassmaking runs deep and I like the feeling that we are continuing its legacy. For me, it was very important for KLIMCHI to be strongly connected with the roots and spirit of its home, the people and their craft." – Lukas Klimcak, owner of KLIMCHI.

We keep the name of our founder Antonin Jilek on our factory chimney to commemorate the principles he stood for; creating timeless pieces of outstanding quality in close cooperation with the glass artisans themselves.



The Tradition of The Glass Artisan

We are not interested in saving time through commercial machine manufacture. We believe that the time we spend with each piece and the years of knowledge invested into every curve tells a deeper story.



**LUKAS KLIMCAK
FOUNDER**

Preserving the legacy of glassmaking and celebrating the true artistry of the craft is the vision that inspired the young entrepreneur Lukas Klimcak to found Czech Republic-based glassware brand KLIMCHI. Whilst studying to become a Master of Science in Lighting Design from the prestigious University College London, Lukas worked with several British design studios. Since his return to KLIMCHI in 2019, Lukas hopes to ignite in his customers the same passion and nostalgia towards Bohemian handmade glassware as he feels.



**FRANTISEK JUNGVRT
CREATIVE DIRECTOR**

Pushing the boundaries of glassmaking. Frantisek Jungvirt is a young Czech designer who recently completed his studies at the Academy of Arts, Architecture and Design in Prague. His experience includes working for well known glass brands as well as private clients. A rising talent in the world of contemporary glass art, Frantisek joined the hardworking team of KLIMCHI in 2020. Since then, the brand has introduced several award-winning collections that found a place in interiors of many satisfied customers worldwide.

**The most colourful portfolio.
Classic design that
never goes out of fashion.
Cherishing the traditional
techniques, coming
in strikingly
beautiful shades.**

Hobnail Collection



An eternal classic. The Hobnail evokes an ageless vintage style that enchants the eye with its unique and bold design. Originating from KLIMCHI's family-run glass factory, every piece is ethically produced using inherited artisan techniques. The collection features wide colour and product range, every piece handblown from high-quality lead-free glass. Scattering light in the most spectacular way, the Hobnail range inspires glass lovers all year round.



**A signature collection
of Hobnail glass creates**



**a combination
of contemporary
and retro feel to your
environment.**

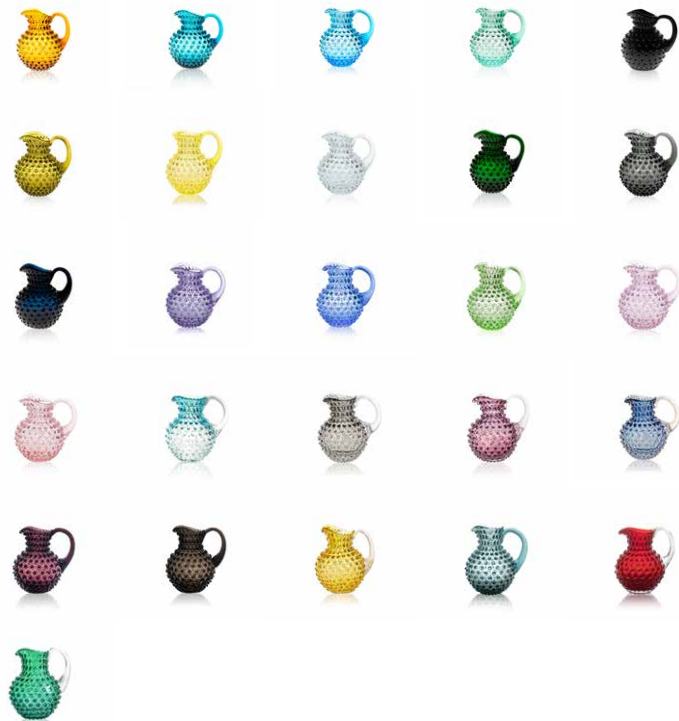
JUGS

Volume: 2000 ml • 67.6 oz
Diameter: 20 cm • 7.9 in
Height: 22 cm • 8.7 in
Weight: 2 kg • 4.4 lbs
Code: 16184/2000



SMALL JUGS

Volume: 1000 ml • 33.8 oz
Diameter: 18 cm • 7.1 in
Height: 18 cm • 7.1 in
Weight: 1 kg • 2.2 lbs
Code: 16184/1000



CREAMER JUGS

Volume: 500 ml • 16.9 oz
Diameter: 13.5 cm • 5.3 in
Height: 14.5 cm • 5.7 in
Weight: 700 g • 1.5 lbs
Code: 16184/500



TALL JUGS MINI

Volume: 350 ml • 11.8 oz
Diameter: 12 cm • 4.7 in
Height: 14 cm • 5.5 in
Weight: 700 g • 1.5 lbs
Code: 16185/350



CARAFES

Volume: 2000 ml • 67.6 oz
Diameter: 19 cm • 7.5 in
Height: 25 cm • 9.8 in
Weight: 2 kg • 4.4 lbs
Code: 16143/2000



TUMBLERS

Volume: 200 ml • 6.8 oz
Diameter: 7.5 cm • 3 in
Height: 12 cm • 4.7 in
Weight: 260 g • 0.6 lbs
Code: 21013/200



TALL TUMBLERS

Volume: 400 ml • 13.5 oz
Diameter: 7.5 cm • 3 in
Height: 16 cm • 6.3 in
Weight: 300 g • 0.7 lbs
Code: 21013/400



GOBLETS

Volume: 300 ml • 10.1 oz
Diameter: 7.5 cm • 3 in
Height: 16 cm • 6.3 in
Weight: 350 g • 0.8 lbs
Code: 41013/300



BOWLS

Volume: 2600 ml • 87.9 oz
Diameter: 23 cm • 9.1 in
Height: 9 cm • 3.5 in
Weight: 1 kg • 2.2 lbs
Code: 5132/23



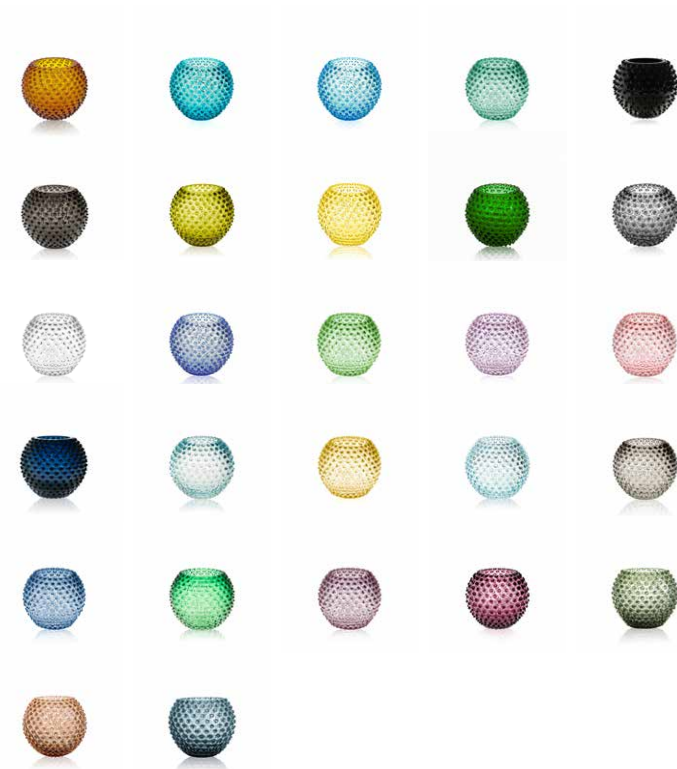
SMALL BOWLS

Volume: 200 ml • 6.8 oz
Diameter: 11.5 cm • 4.5 in
Height: 7 cm • 2.8 in
Weight: 300 g • 0.7 lbs
Code: 5132/11



VASES

Volume: 1800 ml • 60.9 oz
Diameter: 18 cm • 7.1 in
Height: 16 cm • 6.3 in
Weight: 1.2 kg • 2.6 lbs
Code: 8460/18



EGG VASES

Volume: 3000 ml • 101.4 oz
Diameter: 15 cm • 5.9 in
Height: 23 cm • 9.1 in
Weight: 1.2 kg • 2.6 lbs
Code: 8215/23



CANDLES

Volume: 220 ml • 7.4 oz
Diameter: 9.8 cm • 3.9 in
Height: 10 cm • 4 in
Weight: 880g • 1.9 lbs
Code:1223/10



CANDLES GRANDE

Volume: 710 ml • 24 oz
Diameter: 11.8 cm • 4.6 in
Height: 14 cm • 5.5 in
Weight: 1780g • 3.9 lbs
Code: 1223/14



TALL JUGS

Volume: 1000 ml • 33.8 oz
Diameter: 17 cm • 6.7 in
Height: 27 cm • 10.6 in
Weight: 1.5 kg • 3.3 lbs
Code: 16185/1000



CANDLE HOLDERS

Volume: 350 ml • 7.4 oz
Diameter: 10 cm • 3.9 in
Height: 10 cm • 3.9 in
Weight: 720 g • 2 lbs
Code: 1222/10



LARGE CANDLE HOLDERS

Volume: 950 ml • 24 oz
Diameter: 12 cm • 4.7 in
Height: 14 cm • 5.5 in
Weight: 940 g • 3.3 lbs
Code: 1222/14



COLLAR VASES

Volume: 3000 ml • 101.4 oz
Diameter: 18 cm • 7.1 in
Height: 20 cm • 7.9 in
Weight: 1.5kg • 3.3 lbs
Code: 84051/18



SQUARE JUGS

Volume: 2000 ml • 67.6 oz
Diameter: 19 cm • 7.5 in
Height: 25 cm • 9.8 in
Weight: 2 kg • 4.4 lbs
Code: 16144/2000



Shadows Collection

DESIGNED BY CREATIVE DIRECTOR
FRANTISEK JUNGVIRT



Bare, beautiful and effortlessly chic, SHADOWS offer a minimalistic edge with a modern twist. Consisting of eight designs, the collection is available in four lavish colours and one exclusive gold-rimmed line for those who enjoy a finer dining experience with signature pieces. Taking decorative elegance to the next level, all pieces are hand-blown and hand-polished in the company's workshop, making every piece an original.



CARAFES

Volume: 1400 ml • 47.3 oz
Diameter: 14 cm • 5.5 in
Height: 25 cm • 9.8 in
Weight: 2 kg • 4.4 lbs
Code: 2021/1400



VASES

Volume: 1100 ml • 37.2 oz
Diameter: 13.5 cm • 5.3 in
Height: 22.5 cm • 8.9 in
Weight: 2 kg • 4.4 lbs
Code: 2020/22.5



HIGH BALL GLASSES

Volume: 350 ml • 11.8 oz
Diameter: 10.3 cm • 4.1 in
Height: 12.5 cm • 4.9 in
Weight: 300 g • 0.7 lbs
Code: 2022/350



LARGE BOWLS

Volume: 1700 ml • 57.5 oz
Diameter: 22.5 cm • 8.9 in
Height: 14.5 cm • 5.7 in
Weight: 2.5 kg • 5.5 lbs
Code: 2026/22.5



DRINKING GLASSES

Volume: 200 ml • 6.8 oz
Diameter: 9 cm • 3.5 in
Height: 9 cm • 3.5 in
Weight: 200 g • 0.4 lbs
Code: 2024/200



MEDIUM BOWLS

Volume: 600 ml • 20.3 oz
Diameter: 15.8 cm • 6.2 in
Height: 11 cm • 4.3 in
Weight: 1.2 kg • 2.7 lbs
Code: 2027/16



ESPRESSO CUPS

Volume: 55 ml • 1.9 oz
Diameter: 6.5 cm • 2.6 in
Height: 6.5 cm • 2.6 in
Weight: 60 g • 0.1 lbs
Code: 2025/55



SMALL BOWLS

Volume: 200 ml • 6.8 oz
Diameter: 10.5 cm • 4.1 in
Height: 7.5 cm • 3 in
Weight: 250 g • 0.6 lbs
Code: 2028/10.5



Shadows Stemware

DESIGNED BY CREATIVE DIRECTOR
FRANTISEK JUNGVRT



CHAMPAGNE GLASSES

Volume: 230 ml • 7.8 oz
Diameter: 7.7 cm • 3 in
Height: 25.5 cm • 10 in
Weight: 100 g • 0.2 lbs
Code: 25143/230



WHITE WINE GLASSES

Volume: 230 ml • 7.8 oz
Diameter: 7.7 cm • 3 in
Height: 20.3 cm • 8 in
Weight: 100 g • 0.2 lbs
Code: 25143/231



RED WINE GLASSES

Volume: 420 ml • 14.2 oz
Diameter: 8.2 cm • 3.2 in
Height: 19.3 cm • 7.6 in
Weight: 160 g • 0.4 lbs
Code: 25143/420



COCKTAIL GLASSES

Volume: 170 ml • 5.8 oz
Diameter: 10.4 cm • 4.1 in
Height: 16.3 cm • 6.4 in
Weight: 120 g • 0.3 lbs
Code: 25143/170



COUPE GLASSES

Volume: 120 ml • 4.1 oz
Diameter: 11.2 cm • 4.4 in
Height: 17 cm • 6.7 in
Weight: 110 g • 0.2 lbs
Code: 25143/120



COUPETTE GLASSES

Volume: 80 ml • 2.7 oz
Diameter: 6.8 cm • 2.7 in
Height: 15.5 cm • 6.1 in
Weight: 80 g • 0.2 lbs
Code: 25143/80



For all those who crave a minimalistic edge with a modern twist. Bringing a touch of the divine to their evening drinks. SHADOWS stemware line brings an innovative elegance with iconic design. Teasing and playing with a sparkling luminescence and stunning optics. A bold addition to the signature SHADOWS collection.



Monochrome Edit Collection

DESIGNED BY CREATIVE DIRECTOR
FRANTISEK JUNGVRT

Inspired by the soaring silhouette of the poplar tree, Monochrome vases perfectly capture the tree's slender stems and resilient beauty. Earthy tones softened with sandblasted glass.

The dramatic height and long sweeping curves of this piece marks the Monochrome vase as unique amongst KLIMCHI's collections. Intended for grasses and long stem flowers, this exclusive new design finds harmony between the contemporary and the untamed beauty of nature.



VASES

Volume: 1600 ml • 54.1 oz
Diameter: 10.5 cm • 4.1 in
Height: 38 cm • 15 in
Weight: 2 kg • 4.4 lbs
Code: 20214/38



Linea Collection

DESIGNED BY CREATIVE DIRECTOR
FRANTISEK JUNGVIRT



Finding beauty in the minimal. LINEA embodies a delicate harmony between the simple and the complex, seeking inspiration from modern architecture and purity of form. The calming elegance of clean shapes and refined lines creates a tableware line that transforms everyday dining into a celebration of contemporary minimalism. Handcrafted with artisanal expertise, each piece in the range is finely finished to perfection before it receives the KLIMCHI mark of excellence.

CARAFES

Volume: 1100 ml • 37.2 oz
Diameter: 11.5 cm • 4.5 in
Height: 24 cm • 9.5 in
Weight: 0.8 kg • 1.8 lbs
Code: 20212/1100



TUMBLERS

Volume: 250 ml • 8.5 oz
Diameter: 8.6 cm • 3.4 in
Height: 11 cm • 4.3 in
Weight: 210 g • 0.5 lbs
Code: 20242/250



SMALL BOWLS

Volume: 150 ml • 5.1 oz
Diameter: 9 cm • 3.5 in
Height: 7 cm • 2.8 in
Weight: 200 g • 0.4 lbs
Code: 20282/9



MEDIUM BOWLS

Volume: 520 ml • 17.6 oz
Diameter: 13 cm • 5.1 in
Height: 11 cm • 4.3 in
Weight: 380 g • 0.8 lbs
Code: 20272/13



LARGE BOWLS

Volume: 1050 ml • 35.5 oz
Diameter: 16 cm • 6.3 in
Height: 13 cm • 5.1 in
Weight: 800 g • 1.8 lbs
Code: 20262/16



SMALL CANDLES

Volume: 150 ml • 5.1 oz
Diameter: 9 cm • 3.5 in
Height: 7 cm • 2.8 in
Weight: 400 g • 0.9 lbs
Code: 1224/7



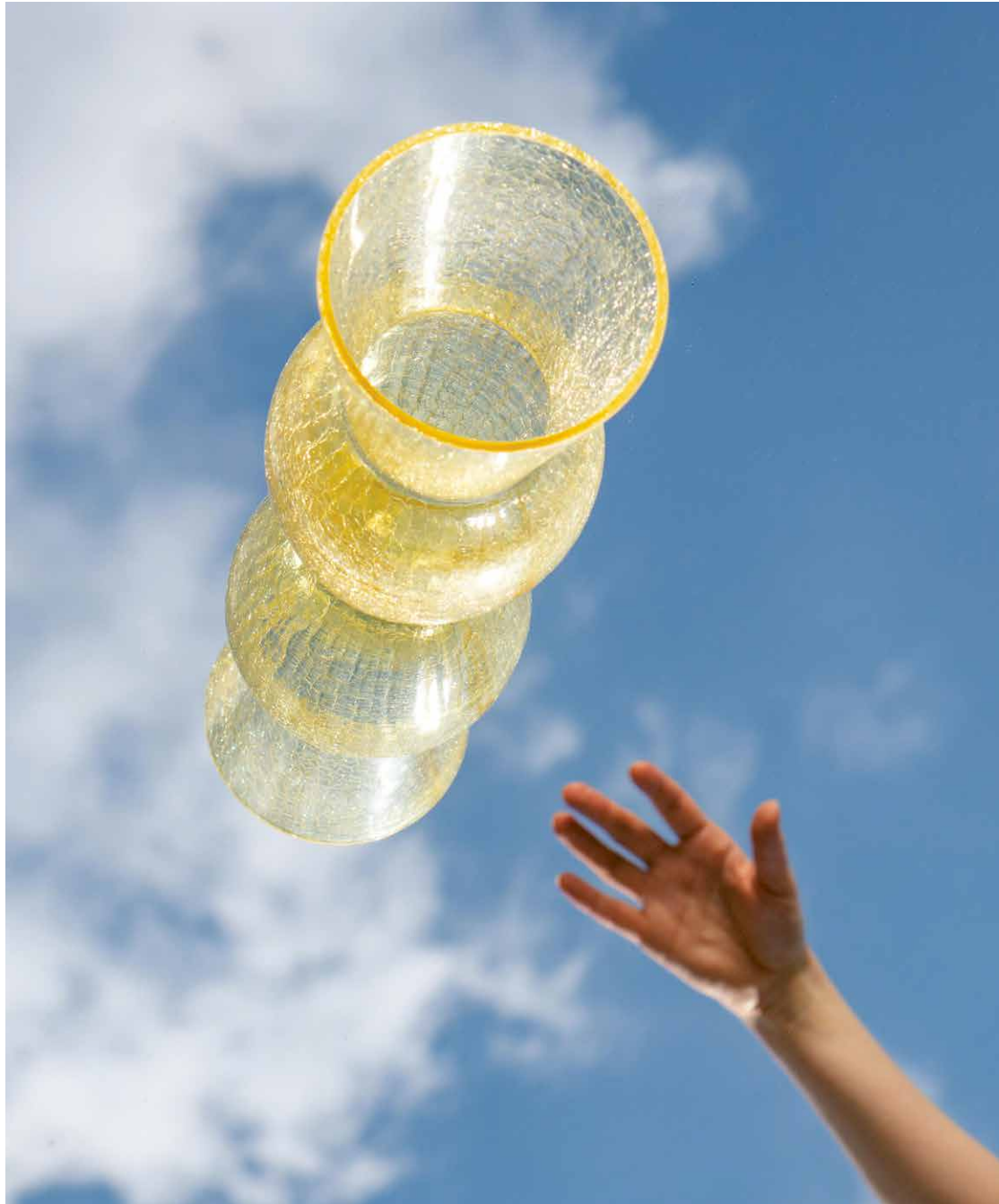
CANDLES

Volume: 520 ml • 17.6 oz
Diameter: 13 cm • 5.1 in
Height: 11 cm • 4.3 in
Weight: 900 g • 2 lbs
Code: 1224/11



Felicity Collection

DESIGNED BY CREATIVE DIRECTOR
FRANTISEK JUNGVRT



Simple elegance with a unique twist of the unexpected. The Felicity collection fuses contemporary design with the delicate work of the glass artisan in this range of elegant crackle vases. Radiant in sunlight, each colour has been carefully selected to evoke a vibrant flow of energy as well as an abundance of harmony and peacefulness for any interior.

VASES

Volume: 1200 ml • 40.6 oz
Diameter: 11 cm • 4.3 in
Height: 23 cm • 9.1 in
Weight: 0.8 kg • 1.8 lbs
Code: 20214/23





Marika Collection



The subtle curves of the Marika Collection blend well with both rustic settings and modern tablescapes. An alternative to heavier decors, Marika takes inspiration from the shapeless nature of liquids, allowing the boundary of the glass to become 'one' with the drink it holds. Finding beauty in its simplicity, the range is also perfect for holding flowers, from single elegant stems to lavish bouquets.





**MORNING
NOON
NIGHT**
A WAY OF LIVING

MARIKA

KLIMCHI

JUGS

Volume: 2000 ml • 67.6 oz
Diameter: 20 cm • 7.9 in
Height: 22 cm • 8.7 in
Weight: 2 kg • 4.4 lbs
Code: 16184/2000



TUMBLERS

Volume: 250 ml • 8.5 oz
Diameter: 8 cm • 3.2 in
Height: 9.5 cm • 3.7 in
Weight: 250 g • 0.6 lbs
Code: 20068/250



VASES

Volume: 1800 ml • 60.9 oz
Diameter: 18 cm • 7.1 in
Height: 16 cm • 6.3 in
Weight: 1.2 kg • 2.7 lbs
Code: 8460/18



LARGE VASES

Volume: 3000 ml • 101.4 oz
Diameter: 23 cm • 9.1 in
Height: 22 cm • 8.7 in
Weight: 1.5 kg • 3.3 lbs
Code: 8450/23



CONE VASES

Volume: 2800 ml • 94.7 oz
Diameter: 15 cm • 5.9 in
Height: 25 cm • 9.8 in
Weight: 1 kg • 2.2 lbs
Code: 8764/25



KLIMCHI

MARIKA

37

EGG VASES

Volume: 3500 ml • 118.4 oz
Diameter: 15 cm • 5.9 in
Height: 23 cm • 9.1 in
Weight: 1.2 kg • 2.7 lbs
Code: 8215/23



BOWLS

Volume: 1450 ml • 49 oz
Diameter: 23 cm • 9.1 in
Height: 10.5 cm • 4.1 in
Weight: 1.5 kg • 3.3 lbs
Code: 5232/23



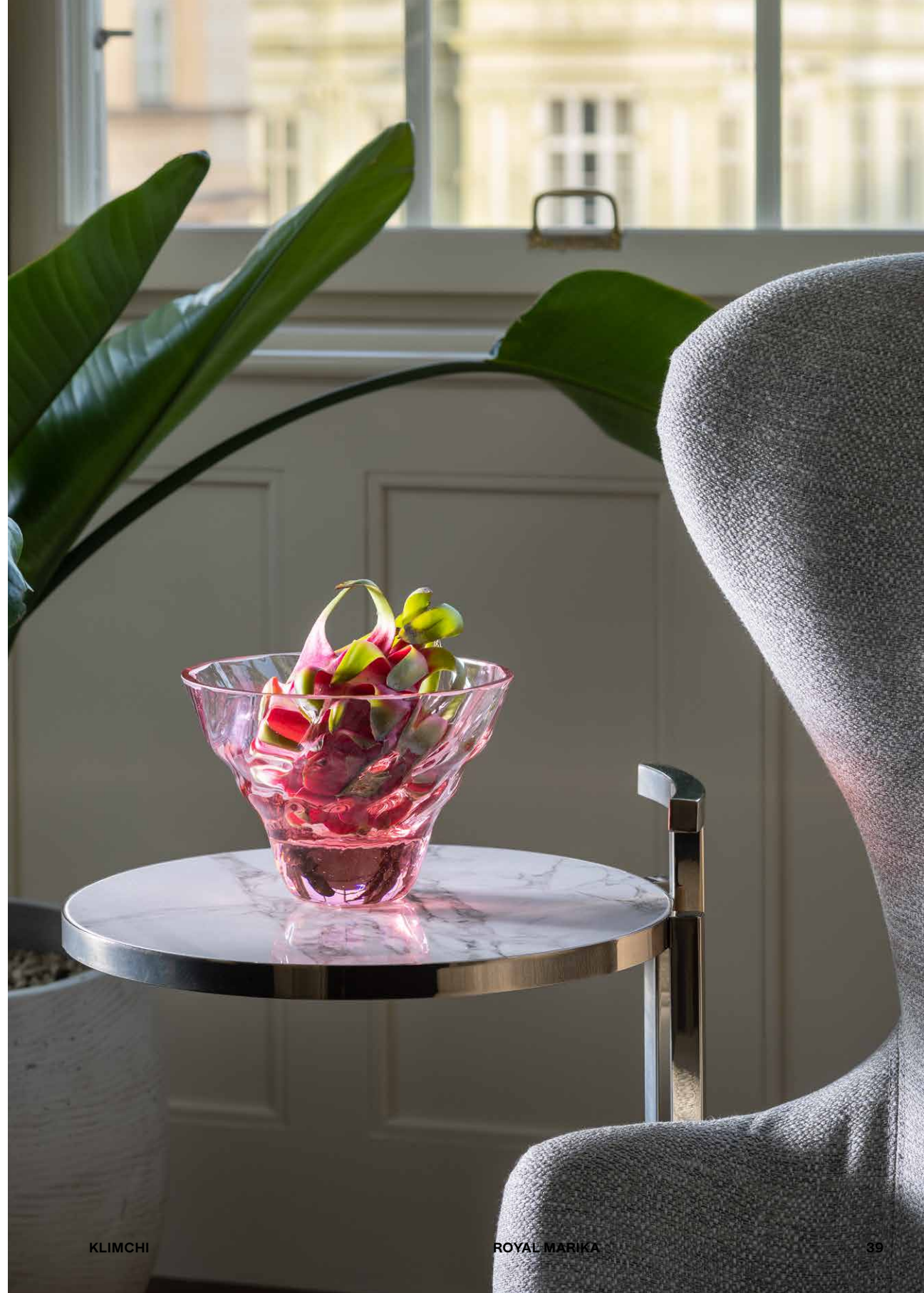
GLASSES

Volume: 250 ml • 8.5 oz
Diameter: 8 cm • 3.2 in
Height: 9.5 cm • 3.7 in
Weight: 250 g • 0.6 lbs
Code: 2126/250



ROUND TUMBLERS

Volume: 210 ml • 7.1 oz
Diameter: 8 cm • 3.2 in
Height: 9.5 cm • 3.7 in
Weight: 250 g • 0.6 lbs
Code: 2133/210



Royal Marika Collection

DESIGNED BY CREATIVE DIRECTOR
FRANTISEK JUNGVRT



LARGE BOWLS

Volume: 1850 ml • 62.6 oz
Diameter: 30 cm • 11.8 in
Height: 11 cm • 4.3 in
Weight: 3 kg • 6.6 lbs
Code: 5132/30



MEDIUM BOWLS

Volume: 1350 ml • 45.7 oz
Diameter: 21 cm • 8.3 in
Height: 14 cm • 5.5 in
Weight: 1 kg • 2.2 lbs
Code: 5132/21



SMALL BOWLS

Volume: 160 ml • 5.4 oz
Diameter: 12.2 cm • 4.8 in
Height: 8 cm • 3.1 in
Weight: 560 g • 1.2 lbs
Code: 5132/12



Our range of Royal Marika bowls was inspired by the undulating curves of coastal waves carved into glistening stretches of sand. Gentle ripples radiate from the solid base, capturing and reflecting light, elevating the simple bowl to the level of glass art for the dining table. Delicately coloured in gentle shades of light green, rosaline and underlay blue, this is a centre piece worthy of the most discerning table stylists.

Kugel Collection



A bold and stunning choice. The Kugel range is defined by its unorthodox design, taking inspiration from the dynamic interplay between geometric forms. Combined with the timelessness of Bohemian crystal, this range defies silence and subtlety. Offered in a vibrant array of shades, each piece of the collection is handcrafted by KLIMCHI's resident artisans with the utmost care and passion.

JUGS

Volume: 2000 ml • 67.6 oz
 Diameter: 20 cm • 7.9 in
 Height: 22 cm • 8.7 in
 Weight: 2 kg • 4.4 lbs
 Code: 16184/2000



LARGE DROP VASES

Volume: 4000 ml • 135.3 oz
 Diameter: 15 cm • 5.9 in
 Height: 31 cm • 12.2 in
 Weight: 1.5 kg • 3.3 lbs
 Code: 8764/31



CONE VASES

Volume: 2800 ml • 94.7oz
 Diameter: 15 cm • 5.9 in
 Height: 25 cm • 9.8 in
 Weight: 1 kg • 2.2 lbs
 Code: 8764/25



EGG VASES

Volume: 3500 ml • 118.4 oz
 Diameter: 15 cm • 5.9 in
 Height: 23 cm • 9.1 in
 Weight: 1.2 kg • 2.7 lbs
 Code: 8215/23



LARGE ROUND VASES
 Volume: 2500 ml • 84.5 oz
 Diameter: 20 cm • 7.9 in
 Height: 21 cm • 8.3 in
 Weight: 1.5 kg • 3.3 lbs
 Code: 8460/20.5



ROUND VASES
 Volume: 1800 ml • 60.9 oz
 Diameter: 18 cm • 7.1 in
 Height: 16 cm • 6.3 in
 Weight: 1.2 kg • 2.7 lbs
 Code: 8460/18



LARGE TUMBLERS
 Volume: 280 ml • 9.5 oz
 Diameter: 8 cm • 3.1 in
 Height: 9.5 cm • 3.7 in
 Weight: 210 g • 0.5 lbs
 Code: 2133/280



MEDIUM TUMBLERS
 Volume: 210 ml • 7.1 oz
 Diameter: 7.5 cm • 3 in
 Height: 8.2 cm • 3.2 in
 Weight: 210 g • 0.5 lbs
 Code: 2025/210



Beer Mugs

DESIGNED BY CREATIVE DIRECTOR
 FRANTISEK JUNGVIRT



Immersed within a culture rich with the tradition of artisanal beer brewing, Czech glass artists have long known the secret to crafting the superior beer glass. Inspired by the curving bow of ancient casks, the Beer Mugs collection inspires both tension and dialogue between enshrined tradition and contemporary craft. Hand cut with master precision and expertly shaped at our studio, these pieces are destined to awaken the avant-garde in any beer connoisseur.

BEER MUGS
 Volume: 500 ml • 16.9 oz
 Diameter: 16 cm • 6.3 in
 Height: 14 cm • 5.5 in
 Weight: 1 kg • 2.2 lbs
 Code: 283312/500



SMALL BEER MUGS
 Volume: 300 ml • 10.1 oz
 Diameter: 13 cm • 5.1 in
 Height: 12 cm • 4.7 in
 Weight: 520 g • 1.2 lbs
 Code: 283312/300



Crust Collection

DESIGNED BY CREATIVE DIRECTOR
FRANTISEK JUNGVRT



Enveloping and enfolding, the Crust collection offers a timeless luxury drinking experience to even the most discerning of hosts. Inspired by the unique movement of wood grains beneath bark. Deep amber tones and aquatic blues denote a rich and intense luminosity, ideal for late night aperitifs outdoors or by the fire in the colder months.

CARAFES

Volume: 1100 ml • 37.2 oz
Diameter: 10.5 cm • 4.1 in
Height: 21.7 cm • 8.5 in
Weight: 720 g • 1.6 lbs
Code: 20213/1100



SHOT GLASSES

Volume: 55 ml • 1.9 oz
Diameter: 6.5 cm • 2.6 in
Height: 5.5 cm • 2.2 in
Weight: 180 g • 0.4 lbs
Code: 20072/130



TUMBLERS

Volume: 250 ml • 8.5 oz
Diameter: 8.8 cm • 3.5 in
Height: 9.7 cm • 3.8 in
Weight: 220 g • 0.5 lbs
Code: 20070/250



DRINKING GLASSES

Volume: 200 ml • 6.8 oz
Diameter: 7.5 cm • 3 in
Height: 7.8 cm • 3.1 in
Weight: 160 g • 0.4 lbs
Code: 20071/200



Klimchi Candles Collection

DESIGNED BY CREATIVE DIRECTOR
FRANTISEK JUNGVRT

Captivate the senses. KLIMCHI's scented candle collection is the epitome of luxury and exclusivity. Its sophisticated fragrance composition will delight even the most demanding. Each scented candle is hand-poured into an artisan-crafted glass vessel. The wooden wick is genuine Cocobolo hardwood, carefully sourced and crafted to create a slow burning gentle flame. Each candle is richly infused with a delicate mix of essential oils and high grade fragrance to bring any space in harmony with nature.



KLIMCHI CANDLES
Volume: 250 ml • 8.5 oz
Diameter: 10 cm • 3.9 in
Height: 11 cm • 4.3 in
Weight: 1.5 kg • 3.3 lbs
Code: 1221/11

NIGHTFALL VANILLA
Earthy notes of tobacco leaves and the smooth sweetness of vanilla.

POPLIN AFFAIR
Scent of fresh cotton and clear vast skies.

PINE PARADISE
Authentic sweet aroma of honey, vanilla and caramel together with traditional gingerbread and star anise.

ROSE LUSH
Velvet sweet notes of rose balanced with a warm citrus twist.



LEMON BLISS
Uplifting aroma of zesty citrus notes and subtle woody undertones.



Drama Collection

DESIGNED BY CREATIVE DIRECTOR
FRANTISEK JUNGVRT





Inspired by the decadence of the Opera and the golden beauty of the Music Hall. Our DRAMA collection is designed to transform a silent space into the sweeping opulence of a grand theatre. This range is defined by its undulating surface detail, creating a stunning synthesis of glittering light and vivid colour. These sweeping vases demand only the most lavish bouquets. Expecting nothing less than a standing ovation.

DRAMA VASES

Volume: 2500 ml • 84.5 oz
Diameter: 17 cm • 6.7 in
Height: 32 cm • 12.6 in
Weight: 2 kg • 4.4 lbs
Code: 1021/32

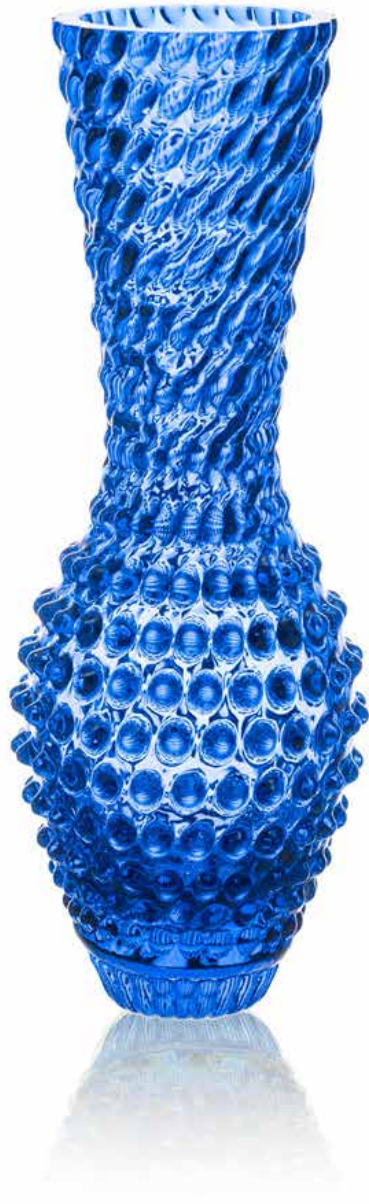


LARGE DRAMA VASES

Volume: 4500 ml • 152.2 oz
Diameter: 17 cm • 6.7 in
Height: 42 cm • 16.5 in
Weight: 3 kg • 6.6 lbs
Code: 1021/42



Fugu Vases



The translucent glass mirrors the ocean's play of light, while delicate hobnail patterns evoke the mesmerising texture of sea bubbles. Fugu vases draw inspiration from the graceful movements of the puffer fish. Each piece is a harmonious fusion of timeless, classic design and a sleek, modern aesthetic, artfully capturing the fluidity of underwater movement.

VASES

Volume: 650 ml • 22 oz
Diameter: 11.5 cm • 4.5 in
Height: 30 cm • 11.8 in
Weight: 1.4 kg • 3.1 lbs
Code: 80923/30



Fairytale Collection



Allow the joyful character of Fairytale to whisk you away into a dream world of wonder. This playful collection takes KLIMCHI's classic Hobnail design and fuses it with the wild and surreal imagination of Japanese iconic artist Yayoi Kusama. Each piece is unique. Irregular. Irreplaceable. A piece of hand-shaped art.

CARAFES

Volume: 750 ml • 25.4 oz
 Diameter: 12.5 cm • 4.9 in
 Height: 25 cm • 9.8 in
 Weight: 1.4 kg • 3.1 lbs
 Code: 12229/750



TUMBLERS

Volume: 210 ml • 7.1 oz
 Diameter: 9 cm • 3.5 in
 Height: 10 cm • 3.9 in
 Weight: 350 g • 0.8 lbs
 Code: 22229/210



VASES

Volume: 1000 ml • 33.8 oz
 Diameter: 19 cm • 7.5 in
 Height: 23 cm • 9.1 in
 Weight: 1.4 kg • 3.1 lbs
 Code: 82229/23



BOWLS

Volume: 1200 ml • 40.6 oz
 Diameter: 22 cm • 8.7 in
 Height: 15.5 cm • 6.1 in
 Weight: 1 kg • 2.2 lbs
 Code: 52229/22



KLIMCHI COLLECTIONS

KLIMCHI

PHOTOS CREDITS

MICHAL KERTÉSZ
ANNA PLESLOVÁ
KATARÍNA HUDAČINOVÁ
LUCY RICHARDS
DANILO FLOREANI
KAROLÍNA MATUŠKOVÁ
FILIP ŠVÁCHA

FOTO LOKACE

ANDAZ PRAGUE
AUGUSTINE HOTEL PRAGUE
GLASSIMO GALLERY
HOME IN HEIDELBERG GERMANY
VINOHRADY THEATRE

GRAPHIC DESIGN

JOSEFINA KARLÍKOVÁ
MATEJ VOJTUŠ

PRINT

TRIANGL PRINT

PRAGUE

2024

KLIMCHI S.R.O.
MIROSLAVA HAJNA 740/2
PRAGUE 9, 199 00
CZECH REPUBLIC
VAT NO. CZ08326452

FB
KLIMCHI
IG
@KLIMCHISTUDIO

HQ:
PALACKÉHO 42
KAMENICKÝ ŠENOV, 471 14
CZECH REPUBLIC

PINTEREST
KLIMCHI
LINKEDIN
KLIMCHI

WWW.KLIMCHI.COM

HOBNAIL

SHADOWS

MONOCHROME EDIT

LINEA

FELICITY

MARIKA

ROYAL MARIKA

CRUST

BEER MUGS

KUGEL

DRAMA

FUGU VASES

FAIRYTALE



Co-funded by
the European Union